



Washington County Parks & Recreation Advisory Board Meeting

Date: Thursday, September 21, 2023

Time: 7:00 p.m.

Place: Zoom meeting <https://us02web.zoom.us/j/89331092682>

Agenda

Item 1: Call to Order, Introductions

Item 2: Public Comments

Item 3: Approval of Minutes

- May and July 2023 minutes

Item 4: Operations Report

Item 5: Old Business

- Capital Projects and Local Share update
- Safety of Dams public meeting October 5, 2023, from 6:00-8:00 pm (location to be announced)

Item 6: New business

- End of season Scoggins Valley Outfitters report

Item 7: PRAB Issues/Discussion

Item 8: Adjournment

Next Meeting: November 16, 2023



Washington County Parks & Recreation Advisory Board Minutes

Date: Thursday, May 18, 2023

Time: 7:00 p.m.

Place: Online Zoom meeting

Members Present: Brad Bittel, Jeff Moxie, Kim Janssen, Kevin Zuercher

Members Absent: Megan McMillan, Melissa Helmick, Mahesh Udata

Public Present: Nico Geeling, Sarah Chinn

Staff Present: Peyton Ellis, Karine Kadyan

Item 1: Call to Order, Introductions, Sign-in

- Meeting called to order at 7:00 p.m. PRAB and staff introductions followed.

Item 2: Public Comments

- Patrick McGee commented that he was having difficulty accessing the water when the reservoir level was low, and the accessible pier was dry. Recommended a movable dock for fishing at C-Ramp.

Item 3: Approval of Minutes

- March 2023 minutes approved.

Item 4: Operations Report

- Peyton Ellis, Parks Superintendent, provided the PRAB an update on operations and maintenance including an update on stolen signs, septic and potable water line repairs.

Item 5: Old business

- PRAB discussed status of Parks budget for fiscal year 2023/2024 and status of campground and Tualatin River access facility projects, specifically as it relates to use of local share

- funding. PRAB restated their commitment to these projects and willingness to advocate for them at such a time it is needed. More information will be shared at the July meeting.
- PRAB discussed a site visit to Scoggins Valley Park for their July meeting. Agreed to move meeting to in-person and convene at the Parks Office at Scoggins Valley Park at 6:00 p.m. on July 20, 2023.

Item 6: New Business

- Karine Kadyan, Parks Management Analyst, provided an update on the recreation program and the on-line reservation system.

Item 7: PRAB Issues/Discussion

None

Item 8: Meeting adjourned at 8:07 p.m.

Next Meeting: July 20, 2023



Washington County Parks & Recreation Advisory Board Minutes

Date: Thursday, July 20, 2023

Time: 7:00 p.m.

Place: Parks Office at Scoggins Valley Park, 50250 SW Scoggins Valley Road, Gaston, OR, 97119

Members Present: Brad Bittel, Megan McMillan,

Members Absent: Melissa Helmick, Mahesh Udata; Jeff Moxie, Kim Janssen

Prospective members: Nico Geeling, Sarah Chinn

Staff Present: Peyton Ellis, Karine Kadyan

Item 1: Call to Order, Introductions, Sign-in

- Meeting called to order at 7:00 p.m. PRAB and staff introductions followed.

Item 2: Public Comments

- None

Item 3: Approval of Minutes

- May 2023 minutes not approved (lack of quorum)

Item 4: Adjournment

PRAB toured Scoggins Valley Park and visited the location for future capital projects including the campground site and proposed park office and visitors center site.

Item 5: Meeting ended at 8:15 p.m.

Next Meeting: September 21, 2023



Metro Parks and Nature Bond Measure - Local Share Allocation Discussion

September 26, 2023

<https://www.washingtoncountyor.gov/>



Today's Purpose

- Review upcoming capital projects in Washington County Parks and associated funding
- Review board input provided in August, 2023
- Review Metro Parks and Nature Bond Measure and Local Share program
- Request direction on utilization of Washington County's Local Share allocation

Policy Question

- How shall Washington County utilize its Metro Local Share allocation?



Parks Capital Projects

In 2020, Washington County accepted two capital grants from the United States Bureau of Reclamation

- Campground at Scoggins Valley Park (\$2,520,215)
- Park Office and Visitor Center at Scoggins Valley Park (\$1,700,000)

Matching funds are required

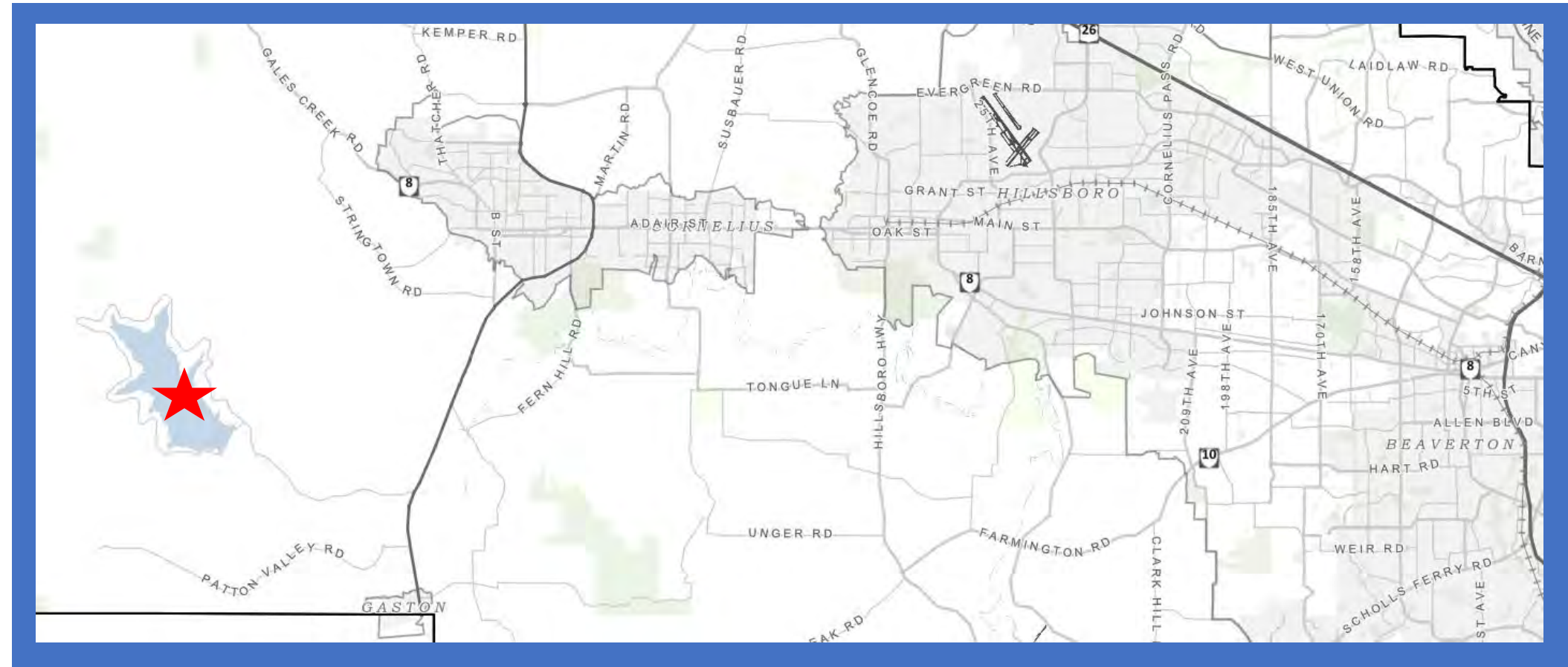
Other (unfunded)

- Tualatin River access facility at Eagle Landing Park (\$586,750)

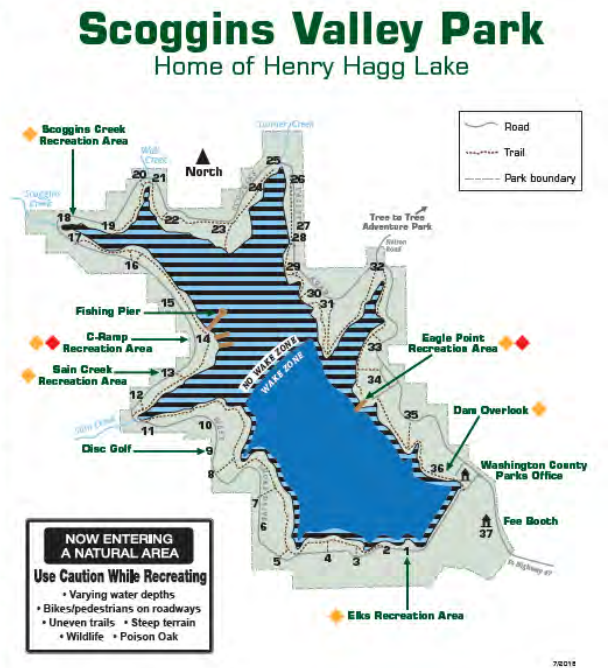


Scoggins Valley Park

- Located in western Washington County south of Forest Grove
- Owned by United States Bureau of Reclamation
- Land managed by Washington County Parks
- 2500-acre park with an 1100-acre reservoir



Facilities	Partial Fee for Other County Parks	Partial Fee for Other County Parks	Partial Fee for Other County Parks	Partial Fee for Other County Parks	Partial Fee for Other County Parks
1. Bike Rec Area	●	●	●	●	●
2. Rainbow View	●	●	●	●	●
3. South Shore 1	●	●	●	●	●
4. South Shore 2	●	●	●	●	●
5. The Palms	●	●	●	●	●
6. Meadows	●	●	●	●	●
7. Turtle	●	●	●	●	●
8. Conifers	●	●	●	●	●
9. Blue Hill	●	●	●	●	●
10. Owl	●	●	●	●	●
11. South Creek 1	●	●	●	●	●
12. San Creek 2	●	●	●	●	●
13. Salk Creek Rec Area	●	●	●	●	●
14. C-Ramp Rec Area	●	●	●	●	●
15. Sitka Cove	●	●	●	●	●
16. Walnut Grove	●	●	●	●	●
17. Reddy Road	●	●	●	●	●
18. Scoggins Creek Rec Area	●	●	●	●	●
19. Coppell Point	●	●	●	●	●
20. West Creek 1	●	●	●	●	●
21. West Creek 2	●	●	●	●	●
22. Forest Dale	●	●	●	●	●
23. Renslow Blue	●	●	●	●	●
24. Tanner Creek 1	●	●	●	●	●
25. Tanner Creek 2	●	●	●	●	●
26. Tanner Creek 3	●	●	●	●	●
27. Tanner Creek 4	●	●	●	●	●
28. Tanner Creek 5	●	●	●	●	●
29. Blufftop	●	●	●	●	●
30. New Dale	●	●	●	●	●
31. Orchard Ridge	●	●	●	●	●
32. Cedar Grove	●	●	●	●	●
33. Woodpacker	●	●	●	●	●
34. Eagle Point Rec Area	●	●	●	●	●
35. Cherry Trail	●	●	●	●	●
36. Dam Overlook	●	●	●	●	●
37. Fee Booth	●	●	●	●	●

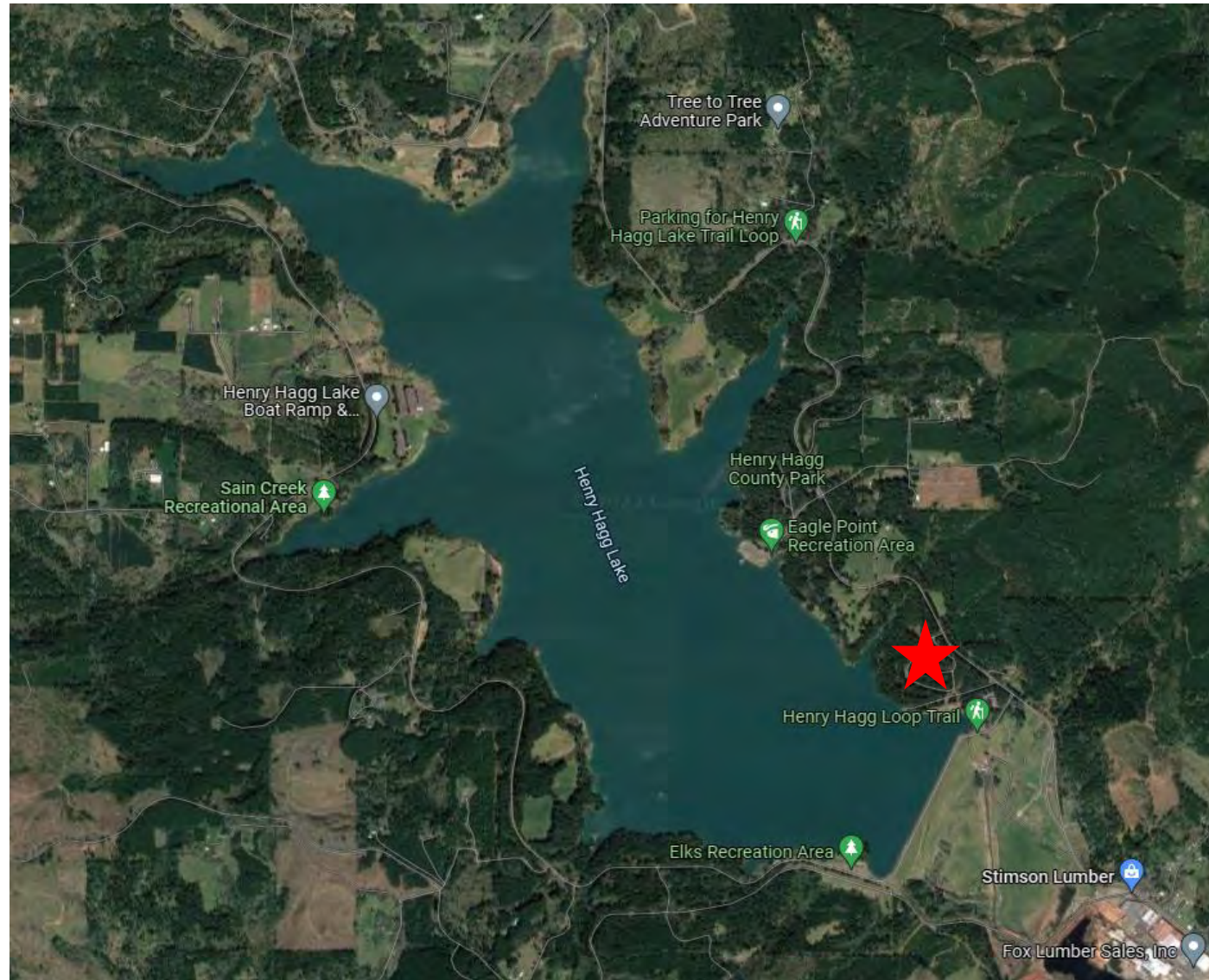


→ Scoggins Valley Park

- Approximately 1,000,000 visitors per year
- Popular activities include boating, fishing, hiking, water recreation and picnicking



→ Scoggins Valley Park



- ★ Campground Site
- ★ Washington County Park Office



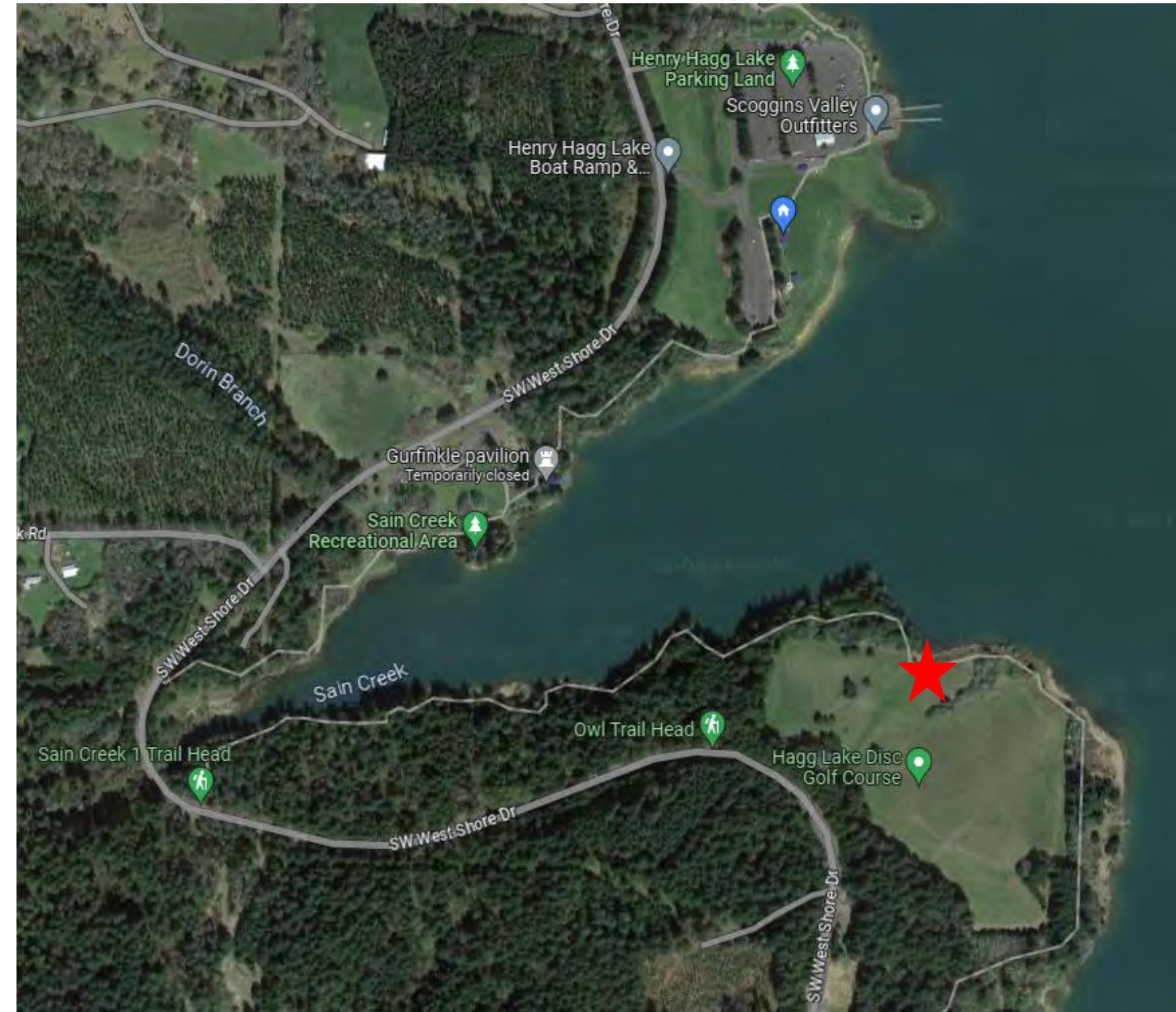
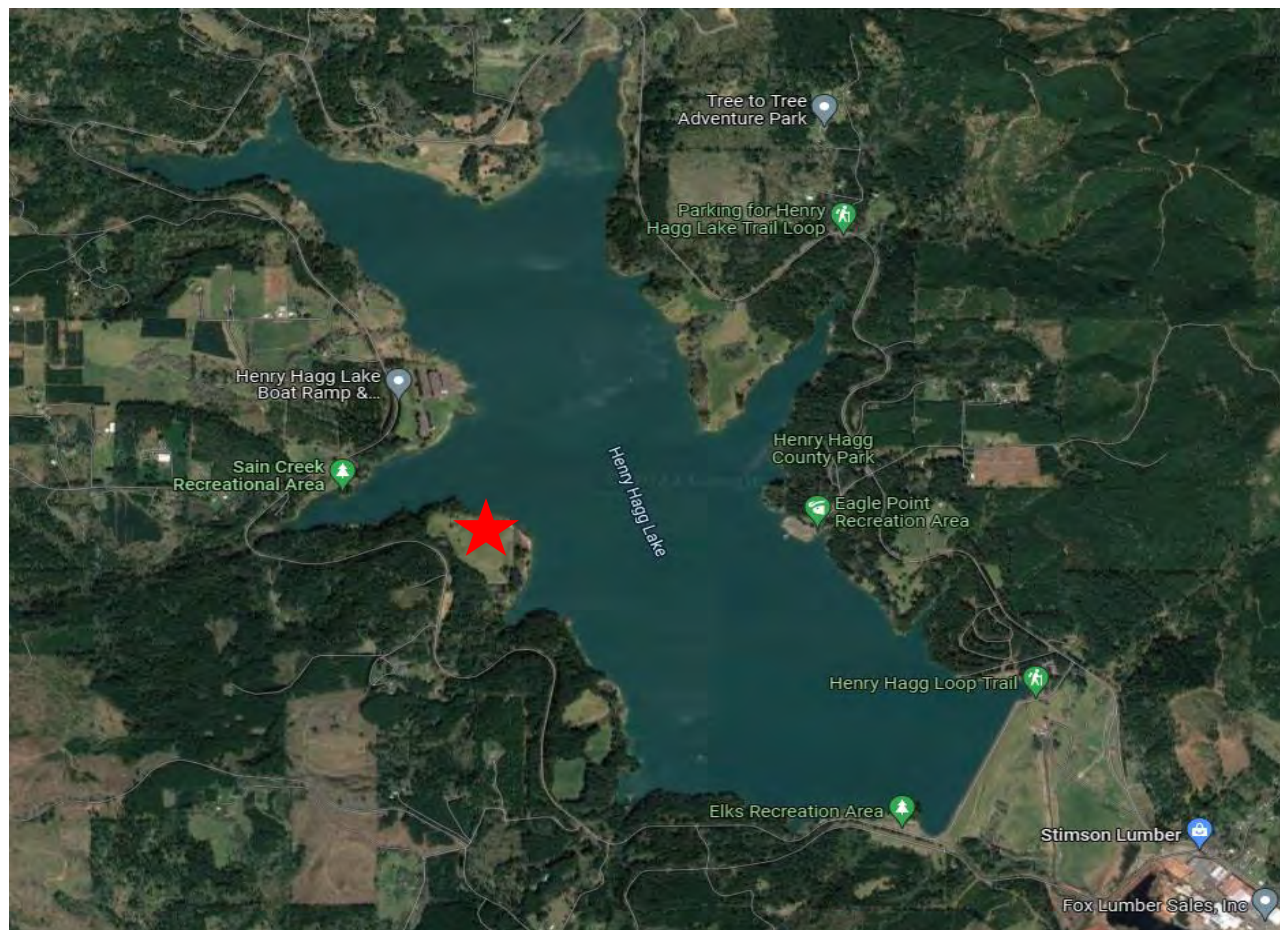
Campground Site


- 32-acre site located near the dam and adjacent to the Washington County Parks office
- Utilities, roads, and other facilities already exist

→ Scoggins Valley Park

Park Office Visitor Center

- Provide visitors information and cultural, historical, nature education
- Provide non-general fund revenue (e.g., rental space for parties and events)
- New office and meeting space for staff

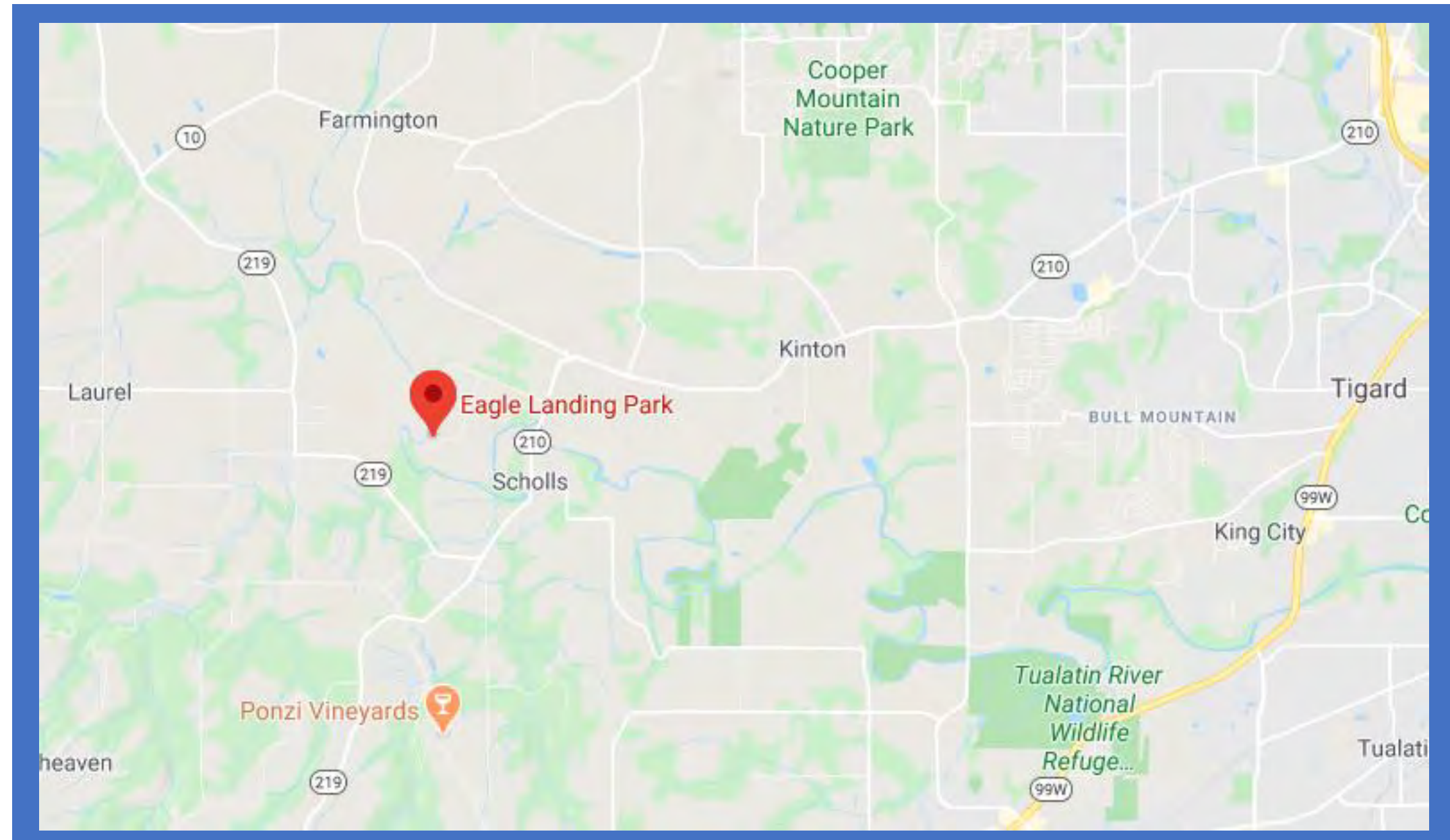


 Park Office/Visitors Center site

→ Eagle Landing Park

Eagle Landing Park

- Located in unincorporated Washington County south of Hillsboro
- 26001 SW Rainbow Lane, Hillsboro, OR 97123
- Originally created as part of the 55-lot Rainbow Ends subdivision in 1950



→ Eagle Landing Park

Tualatin River Access Facility

- The park's primary function is to provide river access for non-motorized watercraft (e.g., kayaks).
- Key link in the multi-jurisdictional Tualatin River National Water Trail
- It is the first take-out spot for river users coming from Metro's upstream Farmington Road Paddle Launch
- The existing river access structure was damaged in a winter storm in 2016 and removed in 2017. Current condition is primitive.
- A facility feasibility study was completed in 2017 identifying build options.

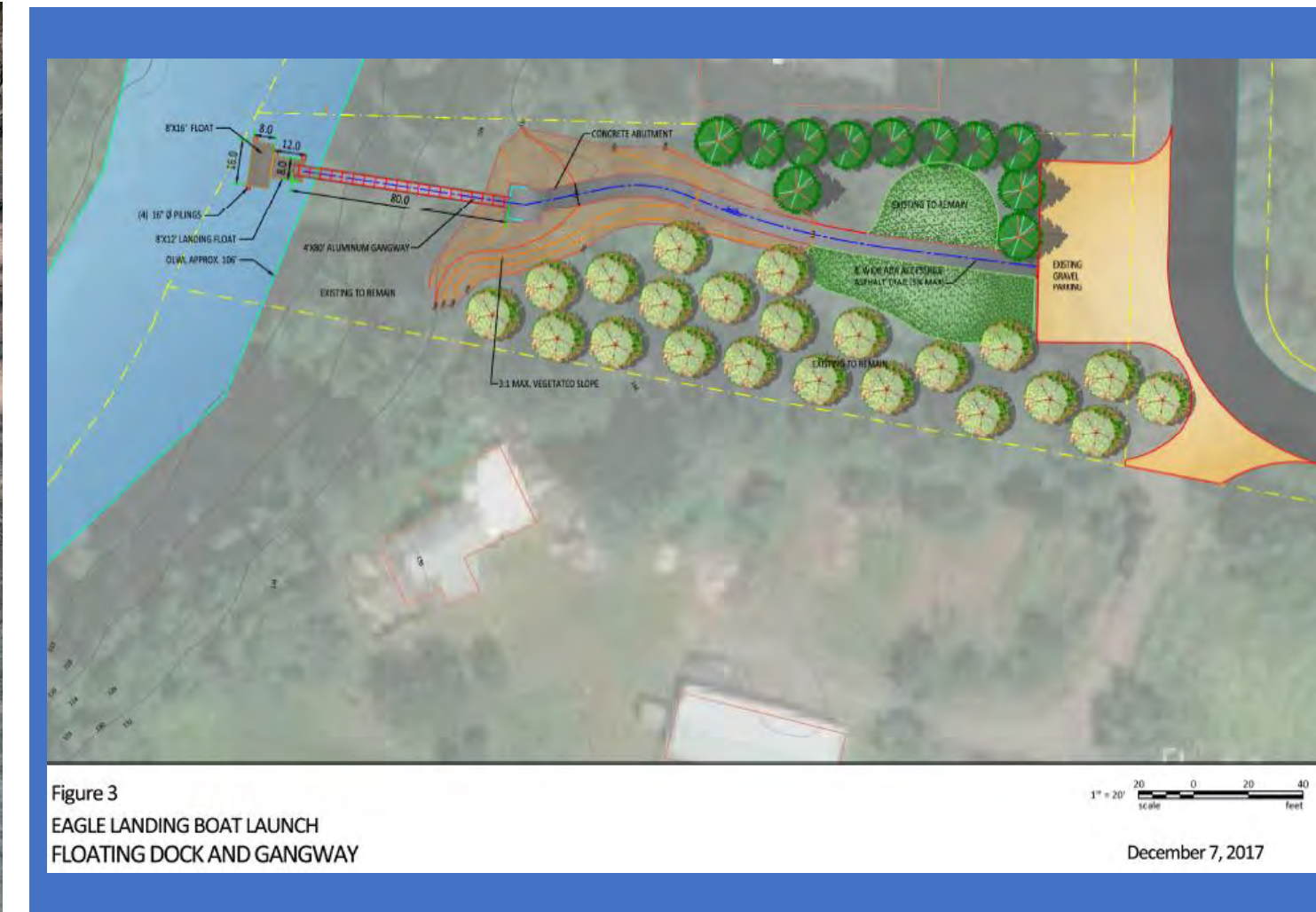


Figure 3
EAGLE LANDING BOAT LAUNCH
FLOATING DOCK AND GANGWAY

December 7, 2017



Cooper Mountain – Tualatin Hills Parks & Rec District

Cooper Mountain Nature Park is a 232-acre park operated by the Tualatin Hills Parks and Recreation District (THPRD). It is located on the south edge of Beaverton. It provides a variety of amenities including a 3½ mile trail that which provides views of the Tualatin River Valley.

In 2022 it welcomed approximately 90,000-100,000 visitors.

THPRD is exploring opportunities to expand Cooper Mountain Park by acquiring adjacent land.

They have requested a contribution from Washington County to demonstrate its support for the project.



What We Heard

What we heard from the Board in August:

- Request an extension to complete projects receiving Federal Assistance Grants
- Pursue non-County funding for match for Park Office/Visitor Center
- Proceed with the feasibility study for the Scoggins Campground
- Support for the Tualatin River Access Facility at Eagle Landing Park
- Options for allocation of Metro Local Share



Metro Parks and Nature Bond Measure

Metro has successfully passed parks bond measures in 1995, 2006 and 2019 to protect natural water bodies and systems, restore fish and wildlife habitat, and provide opportunities for people to experience nature close to home through its regional partners.

Funding Distribution

In November of 2019 over 66% of voters in the tri-county area approved the \$475 million bond measure

2019 Metro Parks Bond Measure - \$475M

- Metro Land purchase and restoration, \$155 million
- Metro park improvements, \$98 million
- Nature in Neighborhoods grants, \$40 million
- Local parks and nature projects, \$92 million
- Walking and biking trails, \$40 million
- Complex community projects, \$50 million



Metro Parks and Nature Bond Measure

Washington County will receive \$3,256,965 of the \$92 million Local Share allocation

Local Share Allocation

Total Metro Local Share	\$92,000,000
Outside of Washington County	\$ 59,517,209
Washington County	\$32,482,791

Washington County Agencies	Allocation
Beaverton	\$ 5,709,843
Cornelius	\$ 902,546
Durham	\$ 310,665
Forest Grove	\$ 1,420,103
Hillsboro	\$ 5,999,692
King City	\$ 417,798
Sherwood	\$ 1,148,149
THPRD	\$ 8,628,869
Tigard	\$ 3,107,156
Tualatin	\$ 1,581,005
Washington County (Unparked Area)	\$ 3,256,965
Total	\$32,482,791

Metro's Bond Measure Goals

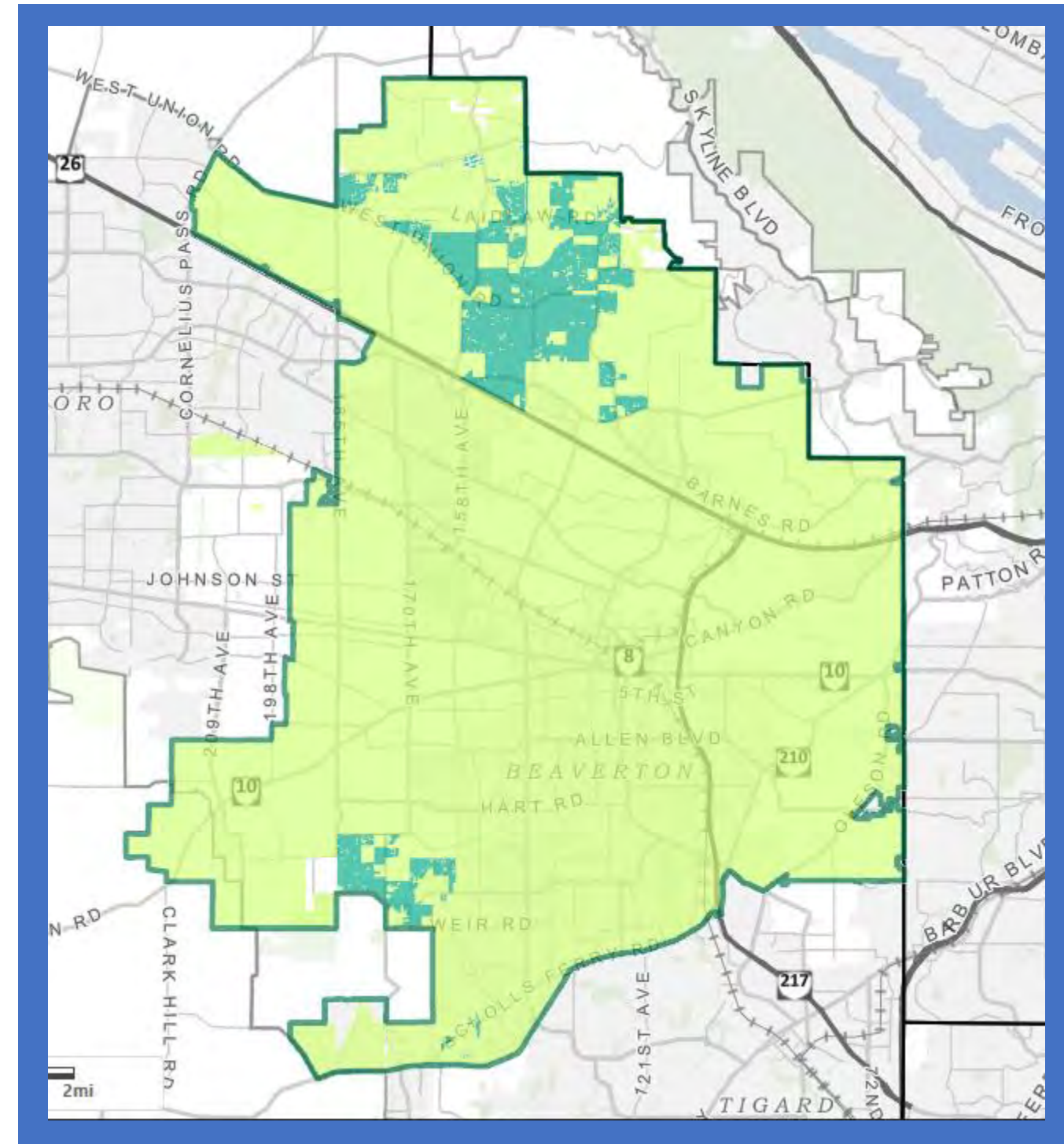
- Community engagement
- Racial equity
- Climate resilience
- Others, such as improving access to water with scenic and/or recreational opportunities



Metro Parks and Nature Bond Measure

Washington County will receive \$3,256,965 of the \$92 million Local Share allocation

- The allocation formula estimated that Washington County's unincorporated population inside the urban growth boundary was 198,089.
- The portion of that population that was estimated to overlap with THPRD boundaries (142,759) was removed from the unincorporated population total leaving a net population of 55,330.



THPRD Boundary



Metro Parks and Nature Bond Measure – Local Share

Staff proposed using the County's \$3.2 million Local Share allocation as follows:

- Scoggins Valley Park Campground
\$2,520,215 (matches USBOR grant)
- Tualatin River Access Facility at Eagle Landing Park
\$586,750
- Tualatin Hills Park and Recreation District Cooper Mountain Project
\$150,000

At the August work session, the BCC discussed these options. Staff is prepared to adjust project allocations pending BCC direction.

→ Requested Action

I move to allocate funding from the Metro Local Share program to the following projects in the amounts discussed tonight and pending results of the feasibility study:

Scoggins Valley Park Campground

Tualatin River - Eagle Landing

Cooper Mountain Land Acquisition





Facilities, Fleet and Parks Department
<https://www.washingtoncountyor.gov/>

Scoggins Valley Outfitters at Scoggins Valley Park

As the County's General Fund faces increasing pressures, Parks is developing new revenue streams to enhance financial stability for operations and maintenance. The revenue produced by the seasonal watercraft rental operation is trending in a positive direction.

Equally as important, providing watercraft rentals at Scoggins Valley Park enhances recreation opportunities and provides one more reason to spend time outdoors. Research has demonstrated that outdoor recreation provides many personal and community health benefits as well as enhancing social cohesion.

Year	Rental Revenue	Concessions	Staff Costs
2021	\$ 19,092	\$ 1,170	\$ 18,658
2022	\$ 37,754	\$ 2,618	\$ 16,686
2023	\$ 40,947	\$ 2,666	\$ 15,148

